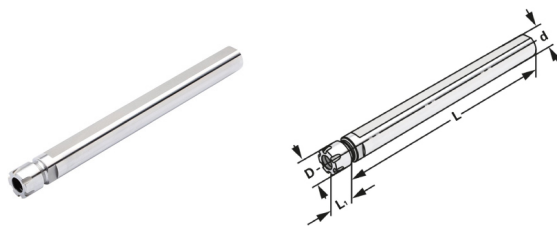


Prodloužení pro kleštiny ER

Collet chucks with straight shank

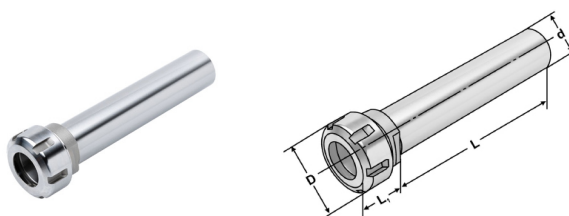


DIN 6499 (ISO 15488)




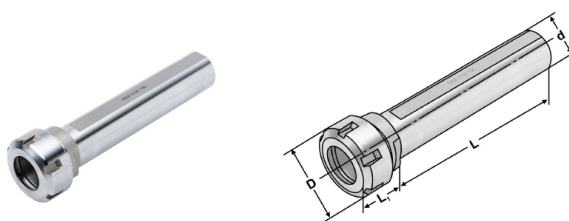
s upínací drážkou
with Mini nuts

Název Catalog number	d_{H6}	Rozsah Capacity	D	L	L ₁	
VD16.150.ERM.11.AD	16	1 - 7 (ER11)	16	150	20	ER11MK
VD20.150.ERM.16.AD	20	1 - 10 (ER16)	22	150	30	ER16MK




s hladkou stopkou
with straight shank

Název Catalog number	d_{H6}	Rozsah Capacity	D	L	L ₁	
V16.150.ER.16.AD	16	1 - 10 (ER16)	32	143	30	ER16K
V20.150.ER.25.AD	20	1 - 16 (ER25)	42	140	40	ER25K
V32.150.ER.32.AD	32	2 - 20 (ER32)	50	150	35	ER32K



s upínací drážkou
with Mini nuts

Název Catalog number	d_{H6}	Rozsah Capacity	D	L	L ₁	
VD16.150.ER.16.AD	16	1 - 10 (ER16)	32	150	30	ER16K
VD20.150.ER.25.AD	20	1 - 16 (ER25)	42	150	40	ER25K
VD32.150.ER.32.AD	32	2 - 20 (ER32)	50	150	35	ER32K
VD40.120.ER.32.AD	40	2 - 20 (ER32)	50	120	35	ER32K

dodávka: s upínací maticí, bez montážního klíče
delivery: with clamping nut, without wrench